



# WILDFIRE SAFETY IMPROVEMENTS PROGRESS CALAVERAS COUNTY

[CLICK HERE TO RETURN TO MAIN PAGE](#)

Below is an overview of our progress on key wildfire safety improvement work as of March 31, 2021.

	COMPLETE THROUGH 2020 <sup>1</sup>		2021 TARGET	2021 COMPLETE	
	Indoor	Outdoor		Indoor	Outdoor
<b>Community Resource Center (CRC) Sites Ready</b>	<b>5</b>	<b>6</b>	<b>N/A<sup>2</sup></b>	<b>5</b>	<b>6</b>
<b>Community-Based Organization (CBO) Partnerships in Place</b>	<b>8</b> Partnerships		<b>1</b> Partnership	<b>1</b> Partnership	
<b>System Hardening Complete</b>	<b>2</b> Line Miles		<b>1</b> Line Mile	<b>0</b> Line Miles	
<b>Transmission and Distribution Sectionalizing Devices Installed</b>	<b>19</b> Devices		<b>2</b> Devices	<b>0</b> Devices	
<b>Enhanced Vegetation Management Complete</b>	<b>191</b> Line Miles		<b>0</b> Line Miles	<b>0</b> Line Miles	
<b>Weather Stations Installed</b>	<b>29</b> Stations		<b>N/A<sup>3</sup></b>	<b>1</b> Station	
<b>High Definition Cameras Installed</b>	<b>4</b> Cameras		<b>N/A<sup>3</sup></b>	<b>0</b> Cameras	

<sup>1</sup> Cumulative progress from 2018 through 2020

<sup>2</sup> CRC planning for 2021 is conducted in coordination with local agencies/tribes and is ongoing

<sup>3</sup> Locations identified on a monthly basis

**Note:** Additional wildfire safety work is planned for this year and will be available in the next progress update. All work plans are subject to change due to weather, access or other schedule constraints.

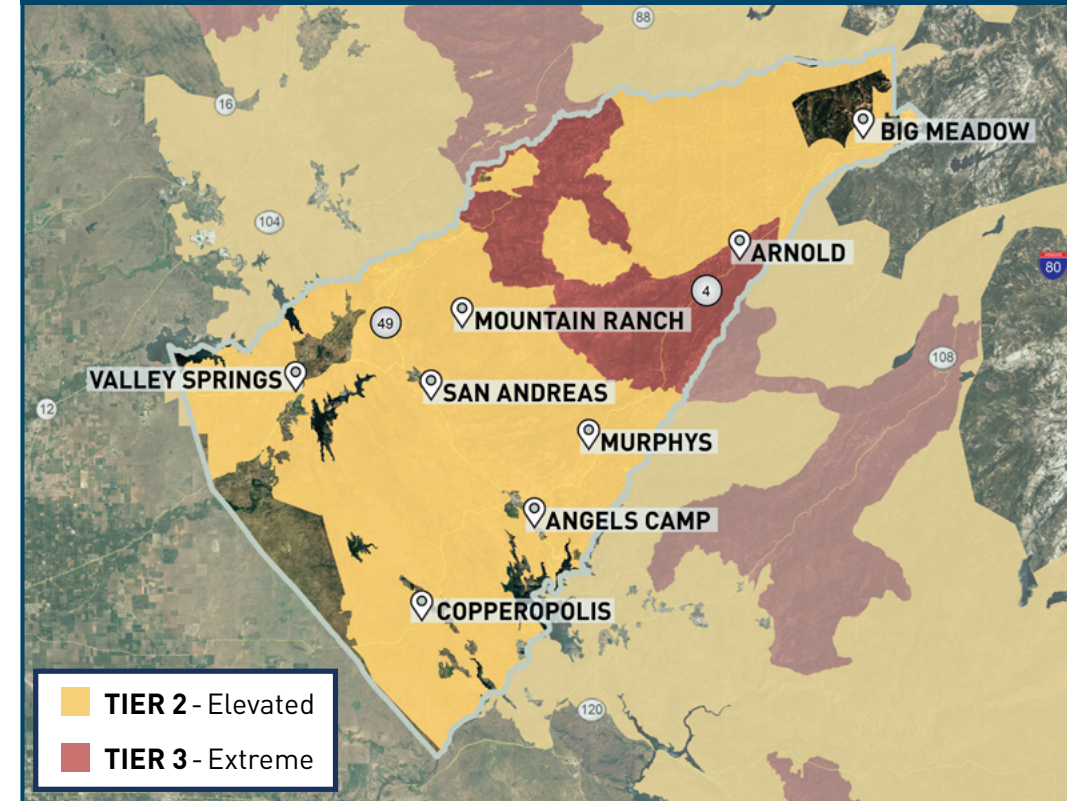


Click the clipboard icon for key initiative descriptions

PG&E is prioritizing its wildfire safety work by:

- ✓ Locations with the highest risk of wildfire
- ✓ Locations that will make our system safer and improve PSPS events

**30,684** total customers served in Calaveras County  
**69%** located in high fire-threat areas



For more information about our wildfire safety work, visit:

[pge.com/wildfiresafety](https://pge.com/wildfiresafety)

For more information about resources available in your community, visit:

[pge.com/disabilityandaging](https://pge.com/disabilityandaging)